

November 21, 2016

SENT VIA FEDERAL EXPRESS

David J. Raimondo
David J. Raimondo & Associates
2780 Middle Country Road, Suite 312
Lake Grove, NY 11755

RE: Freedom of Information Law (FOIL) Request

Dear Mr. Raimondo:

We are in receipt of your letter dated August 18, 2016 requesting records relating to red camera system plans for Hempstead Turnpike and Gardner Ave., in Levittown, New York and Hillside Ave. at Marcus Ave. and Denton Ave. in North New Hyde Park, New York.

Enclosed please find:

- Nassau County, New York Project Plans for Construction of Red Light Photo Safety Program (NY25/Hillside Ave. at Marcus Ave. /Denton Ave.
- Nassau County, New York Redlight Photo Enforcement Program (Signal 104.3 Route 24 and Gardiners Ave./Jerusalem Ave.

Very truly yours,

American Traffic Solutions, Inc.

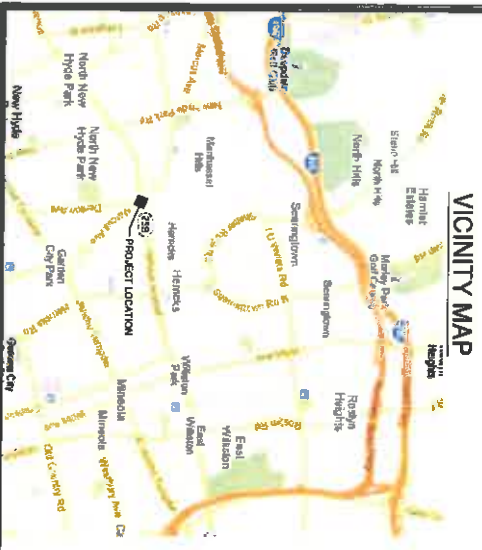


Maureen Manning
Associate General Counsel

THE MOST CURRENT EDITION OF NEW YORK STATE / NASSAU COUNTY DESIGN SPECIFICATIONS FOR HIGHWAYS AND BRIDGES AND SUPPLEMENTAL SPECIFICATIONS AND REQUIREMENTS SPECIAL PROVISIONS HEREIN SHALL GOVERN WHERE APPLICABLE.

NASSAU COUNTY, NEW YORK

PROJECT PLANS FOR THE CONSTRUCTION OF
RED LIGHT PHOTO SAFETY PROGRAM
 AT THE INTERSECTION OF
NY 25B / HILLSIDE AVE AT MARCUS AVE / DENTON AVE



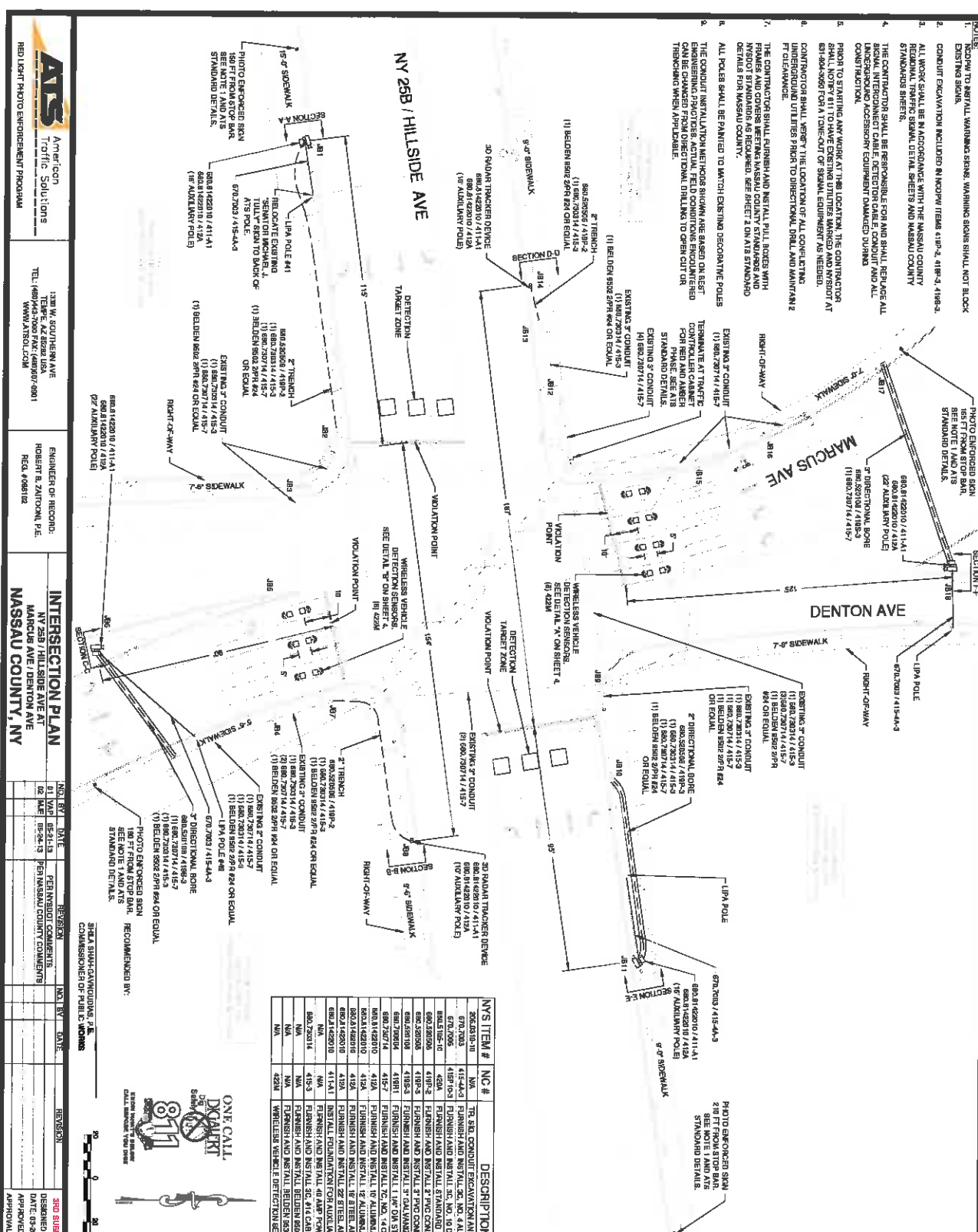
SHEET INDEX

SHEET NO.	SITE ID	DESCRIPTION
1	NC570, NC571,	COVER SHEET
2	NC572, NC573	INTERSECTION PLAN
3		POLE CROSS SECTIONS
4		WVD PHOTOS & DETAILS
5-9		MOT AND MPT PLANS

RECOMMENDED BY:
 BRUCE BRINCKEN/KENTON/DALE, P.E.
 COMMISSIONER OF PUBLIC WORKS



ATS American Traffic Solutions 830 W. SOUTHERN AVE SUITE 202 WEST PALM BEACH, FL 33411 TEL: (561) 861-2200 WWW.ATSOL.COM	ENGINEER OF RECORD: ROBERT B. ZIMONIL, P.E. REG. #089102	COVER SHEET NY 25B / HILLSIDE AVE AT MARCUS AVE / DENTON AVE NASSAU COUNTY, NY		NO. 1 BY DATE 01 WAB 08-14-13	REVISION PER NASSAU COUNTY COMMENTS	NO. 1 BY DATE 01 WAB 08-14-13	REVISION PER NASSAU COUNTY COMMENTS	SCD SUBMITTAL DESIGNED BY: JR DATE: 08-14-13 APPROVED BY: RIZ APPROVAL DATE:	JOB NUMBER 1169 SITE ID/S NASSAU0071 NASSAU0071	SHEET NUMBER 1 OF 9 SHEETS
		REVISION PER NASSAU COUNTY COMMENTS		REVISION PER NASSAU COUNTY COMMENTS		REVISION PER NASSAU COUNTY COMMENTS		REVISION PER NASSAU COUNTY COMMENTS		



- NOTES:**
1. PRIOR TO ANY WORK, ALL WARNING SIGNS, WARNING SIGNS SHALL NOT BLOCK EXISTING SIGNS.
 2. CONDUIT EXCAVATION INCLUDED IN SCOPE ITEMS 4.1-1R-2, 4.1R-3, 4.1R-4.
 3. ALL WORK SHALL BE IN ACCORDANCE WITH THE MASSACHUSETTS COUNTY REGULATORY TRAFFIC SIGNAL DETAIL SHEETS AND MASSACHUSETTS COUNTY STANDARDS SHEETS.
 4. THE CONTRACTOR SHALL BE RESPONSIBLE FOR AND SHALL REPAIR ALL NORMAL INTERCONNECT CABLE, DETECTOR CABLE, CABLE AND ALL UNDERGROUND ACCESSORY EQUIPMENT DAMAGED DURING CONSTRUCTION.
 5. PRIOR TO STARTING ANY WORK AT THIS LOCATION, THE CONTRACTOR SHALL NOTIFY 911 TO HAVE EXISTING UTILITIES MARKED AND VISUALLY IDENTIFIED ON THE JOB SITE. THE CONTRACTOR SHALL BE RESPONSIBLE FOR VERIFYING THE LOCATION OF ALL CONDUCTING UNDERGROUND UTILITIES PRIOR TO DIRECTIONAL DRILL AND MAINTAIN 2 FT CLEARANCE.
 6. THE CONTRACTOR SHALL FURNISH AND INSTALL PULL BOXES WITH 1/2\"/>

LEGEND

	UNDERGROUND CONDUIT (TRENCH)
	DIRECTIONAL BORE
	REAR MONITOR CAMERA ON ATIS POLE
	30 RODS TRACER GUN ATIS POLE
	DETECTION TARGET ZONE
	WIRELESS VEHICLE DETECTION SENSORS
	ATIS METER PEDESTAL
	EXISTING UNDERGROUND CONDUIT
	EXISTING STREET LIGHT
	EXISTING POLE
	EXISTING METER PEDESTAL
	EXISTING WOOD POLE
	EXISTING CONDUIT POLE

ITEM #	NO.	DATE	REVISION
001	1	08-24-13	ISSUE FOR PERMIT
002	2	08-24-13	PER MASSACHUSETTS COUNTY COMMENTS
003	3	08-24-13	PER MASSACHUSETTS COUNTY COMMENTS
004	4	08-24-13	PER MASSACHUSETTS COUNTY COMMENTS
005	5	08-24-13	PER MASSACHUSETTS COUNTY COMMENTS
006	6	08-24-13	PER MASSACHUSETTS COUNTY COMMENTS
007	7	08-24-13	PER MASSACHUSETTS COUNTY COMMENTS
008	8	08-24-13	PER MASSACHUSETTS COUNTY COMMENTS
009	9	08-24-13	PER MASSACHUSETTS COUNTY COMMENTS
010	10	08-24-13	PER MASSACHUSETTS COUNTY COMMENTS
011	11	08-24-13	PER MASSACHUSETTS COUNTY COMMENTS
012	12	08-24-13	PER MASSACHUSETTS COUNTY COMMENTS
013	13	08-24-13	PER MASSACHUSETTS COUNTY COMMENTS
014	14	08-24-13	PER MASSACHUSETTS COUNTY COMMENTS
015	15	08-24-13	PER MASSACHUSETTS COUNTY COMMENTS
016	16	08-24-13	PER MASSACHUSETTS COUNTY COMMENTS
017	17	08-24-13	PER MASSACHUSETTS COUNTY COMMENTS
018	18	08-24-13	PER MASSACHUSETTS COUNTY COMMENTS
019	19	08-24-13	PER MASSACHUSETTS COUNTY COMMENTS
020	20	08-24-13	PER MASSACHUSETTS COUNTY COMMENTS
021	21	08-24-13	PER MASSACHUSETTS COUNTY COMMENTS
022	22	08-24-13	PER MASSACHUSETTS COUNTY COMMENTS
023	23	08-24-13	PER MASSACHUSETTS COUNTY COMMENTS
024	24	08-24-13	PER MASSACHUSETTS COUNTY COMMENTS
025	25	08-24-13	PER MASSACHUSETTS COUNTY COMMENTS
026	26	08-24-13	PER MASSACHUSETTS COUNTY COMMENTS
027	27	08-24-13	PER MASSACHUSETTS COUNTY COMMENTS
028	28	08-24-13	PER MASSACHUSETTS COUNTY COMMENTS
029	29	08-24-13	PER MASSACHUSETTS COUNTY COMMENTS
030	30	08-24-13	PER MASSACHUSETTS COUNTY COMMENTS
031	31	08-24-13	PER MASSACHUSETTS COUNTY COMMENTS
032	32	08-24-13	PER MASSACHUSETTS COUNTY COMMENTS
033	33	08-24-13	PER MASSACHUSETTS COUNTY COMMENTS
034	34	08-24-13	PER MASSACHUSETTS COUNTY COMMENTS
035	35	08-24-13	PER MASSACHUSETTS COUNTY COMMENTS
036	36	08-24-13	PER MASSACHUSETTS COUNTY COMMENTS
037	37	08-24-13	PER MASSACHUSETTS COUNTY COMMENTS
038	38	08-24-13	PER MASSACHUSETTS COUNTY COMMENTS
039	39	08-24-13	PER MASSACHUSETTS COUNTY COMMENTS
040	40	08-24-13	PER MASSACHUSETTS COUNTY COMMENTS
041	41	08-24-13	PER MASSACHUSETTS COUNTY COMMENTS
042	42	08-24-13	PER MASSACHUSETTS COUNTY COMMENTS
043	43	08-24-13	PER MASSACHUSETTS COUNTY COMMENTS
044	44	08-24-13	PER MASSACHUSETTS COUNTY COMMENTS
045	45	08-24-13	PER MASSACHUSETTS COUNTY COMMENTS
046	46	08-24-13	PER MASSACHUSETTS COUNTY COMMENTS
047	47	08-24-13	PER MASSACHUSETTS COUNTY COMMENTS
048	48	08-24-13	PER MASSACHUSETTS COUNTY COMMENTS
049	49	08-24-13	PER MASSACHUSETTS COUNTY COMMENTS
050	50	08-24-13	PER MASSACHUSETTS COUNTY COMMENTS
051	51	08-24-13	PER MASSACHUSETTS COUNTY COMMENTS
052	52	08-24-13	PER MASSACHUSETTS COUNTY COMMENTS
053	53	08-24-13	PER MASSACHUSETTS COUNTY COMMENTS
054	54	08-24-13	PER MASSACHUSETTS COUNTY COMMENTS
055	55	08-24-13	PER MASSACHUSETTS COUNTY COMMENTS
056	56	08-24-13	PER MASSACHUSETTS COUNTY COMMENTS
057	57	08-24-13	PER MASSACHUSETTS COUNTY COMMENTS
058	58	08-24-13	PER MASSACHUSETTS COUNTY COMMENTS
059	59	08-24-13	PER MASSACHUSETTS COUNTY COMMENTS
060	60	08-24-13	PER MASSACHUSETTS COUNTY COMMENTS
061	61	08-24-13	PER MASSACHUSETTS COUNTY COMMENTS
062	62	08-24-13	PER MASSACHUSETTS COUNTY COMMENTS
063	63	08-24-13	PER MASSACHUSETTS COUNTY COMMENTS
064	64	08-24-13	PER MASSACHUSETTS COUNTY COMMENTS
065	65	08-24-13	PER MASSACHUSETTS COUNTY COMMENTS
066	66	08-24-13	PER MASSACHUSETTS COUNTY COMMENTS
067	67	08-24-13	PER MASSACHUSETTS COUNTY COMMENTS
068	68	08-24-13	PER MASSACHUSETTS COUNTY COMMENTS
069	69	08-24-13	PER MASSACHUSETTS COUNTY COMMENTS
070	70	08-24-13	PER MASSACHUSETTS COUNTY COMMENTS
071	71	08-24-13	PER MASSACHUSETTS COUNTY COMMENTS
072	72	08-24-13	PER MASSACHUSETTS COUNTY COMMENTS
073	73	08-24-13	PER MASSACHUSETTS COUNTY COMMENTS
074	74	08-24-13	PER MASSACHUSETTS COUNTY COMMENTS
075	75	08-24-13	PER MASSACHUSETTS COUNTY COMMENTS
076	76	08-24-13	PER MASSACHUSETTS COUNTY COMMENTS
077	77	08-24-13	PER MASSACHUSETTS COUNTY COMMENTS
078	78	08-24-13	PER MASSACHUSETTS COUNTY COMMENTS
079	79	08-24-13	PER MASSACHUSETTS COUNTY COMMENTS
080	80	08-24-13	PER MASSACHUSETTS COUNTY COMMENTS
081	81	08-24-13	PER MASSACHUSETTS COUNTY COMMENTS
082	82	08-24-13	PER MASSACHUSETTS COUNTY COMMENTS
083	83	08-24-13	PER MASSACHUSETTS COUNTY COMMENTS
084	84	08-24-13	PER MASSACHUSETTS COUNTY COMMENTS
085	85	08-24-13	PER MASSACHUSETTS COUNTY COMMENTS
086	86	08-24-13	PER MASSACHUSETTS COUNTY COMMENTS
087	87	08-24-13	PER MASSACHUSETTS COUNTY COMMENTS
088	88	08-24-13	PER MASSACHUSETTS COUNTY COMMENTS
089	89	08-24-13	PER MASSACHUSETTS COUNTY COMMENTS
090	90	08-24-13	PER MASSACHUSETTS COUNTY COMMENTS
091	91	08-24-13	PER MASSACHUSETTS COUNTY COMMENTS
092	92	08-24-13	PER MASSACHUSETTS COUNTY COMMENTS
093	93	08-24-13	PER MASSACHUSETTS COUNTY COMMENTS
094	94	08-24-13	PER MASSACHUSETTS COUNTY COMMENTS
095	95	08-24-13	PER MASSACHUSETTS COUNTY COMMENTS
096	96	08-24-13	PER MASSACHUSETTS COUNTY COMMENTS
097	97	08-24-13	PER MASSACHUSETTS COUNTY COMMENTS
098	98	08-24-13	PER MASSACHUSETTS COUNTY COMMENTS
099	99	08-24-13	PER MASSACHUSETTS COUNTY COMMENTS
100	100	08-24-13	PER MASSACHUSETTS COUNTY COMMENTS

NY 29B / HILLSIDE AVE
INTERSECTION PLAN
 NY 29B / HILLSIDE AVE AT
 MARCUS AVE / DENTON AVE
 MASSACHUSETTS COUNTY, NY

ATIS
 Traffic Solutions
 1330 W. SOUTHERN AVE
 TEMPE, AZ 85282 USA
 TEL: (480) 980-7000
 WWW.ATISOL.COM

ENGINEER OF RECORD:
 ROBERT B. ZIMMON, P.E.
 REG. #98912

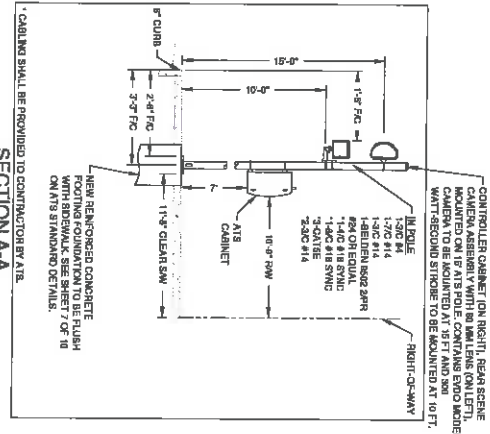
300 SUBMITTAL
 DESIGNED BY: JR
 DATE: 08-29-13
 APPROVED BY: RBZ
 APPROVAL DATE:

JOB NUMBER: 1169
 SHEET NUMBER: 2
 CONTROL NUMBER: 1169-02
 OF 9 SHEETS

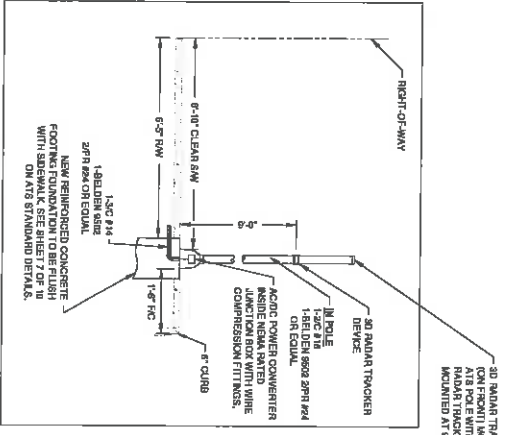
ONE CALL
 811
 CALL BEFORE YOU DIG

SEAL SIGN-GAVINDRONG, T.A., INC.
 COMMISSIONER OF PUBLIC WORKS

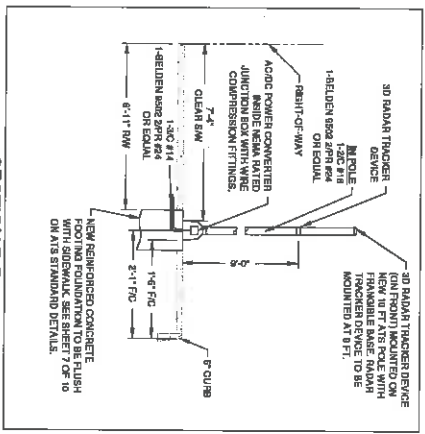
MASSACHUSETTS COUNTY ENGINEER



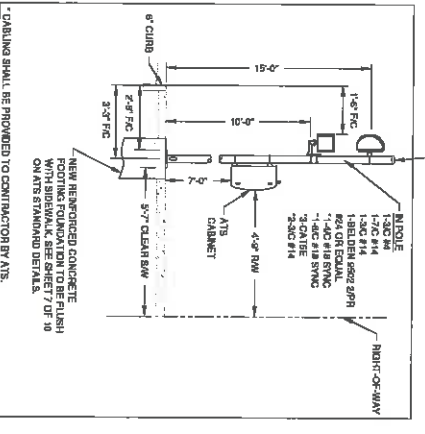
SECTION A-A



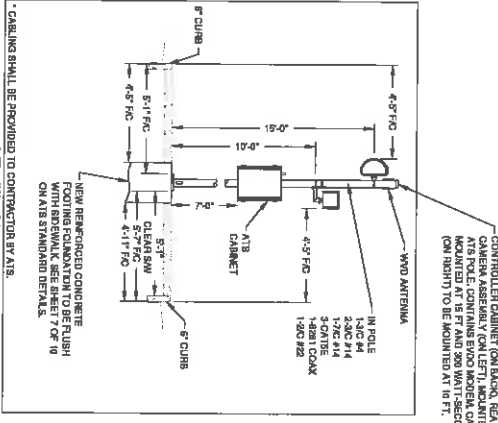
SECTION D-D



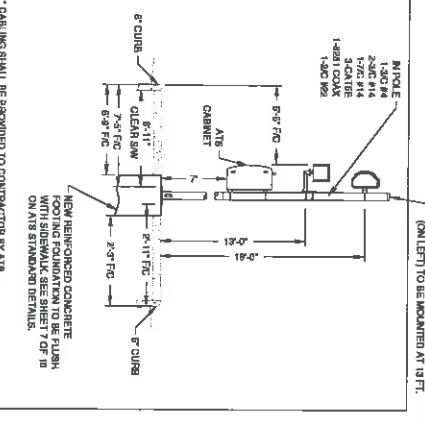
SECTION B-B



SECTION E-E



SECTION C-C



SECTION F-F



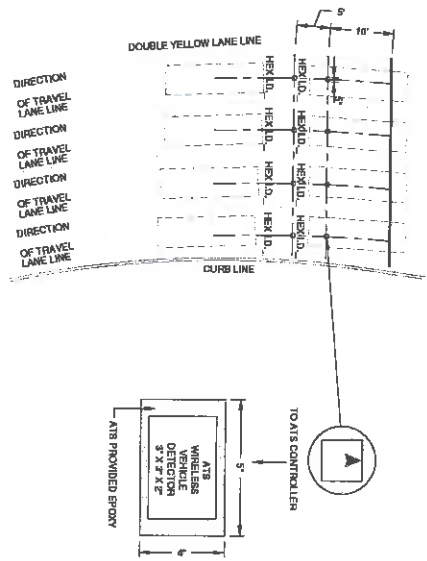
RECOMMENDED BY:
SRINIVASAN, D.E.
COMMISSIONER OF PUBLIC WORKS

ATS
American Traffic Solutions
1820 W. Southern Ave.
Tampa, FL 33629 USA
TEL: (813) 939-7000
WWW.ATSOL.COM

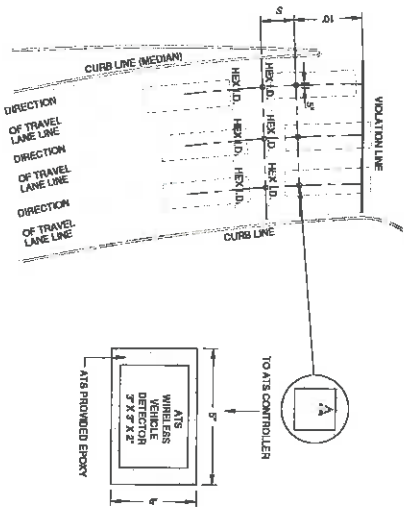
POLE CROSS SECTIONS
NY 28B / HILLSIDE AVE AT
MARGUS AVE / DENTON AVE
NASSAU COUNTY, NY

NO.	REV.	DATE	REVISION
01	WAL	08-24-18	PERMANENT COMMENTS
02	WE	08-24-18	PERMANENT COMMENTS

DESIGNED BY: JR
DATE: 08-24-18
APPROVED BY: HAZ
JOB NUMBER: 1169
SITE DIR: MARGUS AVE / DENTON AVE
SHEET: 3 OF 8 SHEETS



DETAIL "A"
WIRELESS VEHICLE DETECTION SENSORS



DETAIL "B"
WIRELESS VEHICLE DETECTION SENSORS



IMAGE #1



IMAGE #2



IMAGE #3



IMAGE #4



IMAGE #5



IMAGE #6



IMAGE #7



IMAGE #8

IMAGE #9

- ATIS WIRELESS VEHICLE DETECTION SENSORS (WVD) INSTALLATION:**
- TRAILING WYS 10' FROM VIOLATION LINE, MIDDLE OF THE LANE.
 - LEADING WYS 10' FROM VIOLATION LINE, MIDDLE OF THE LANE.
 - DEDICATED RIGHT TURN ONLY.
 - TRAILING WYS 5' FROM VIOLATION LINE, MIDDLE OF THE LANE.
 - LEADING WYS 5' FROM VIOLATION LINE, MIDDLE OF THE LANE.
 - MEASURE & MARK DEAD CENTER OF EACH LANE FROM VIOLATION LINE. (SEE DETAILS "A" & "B")
 - MEASURE AND MARK 10, 15 & 5' FROM DEDICATED RIGHT TURN LANES FROM VIOLATION LINE. (SEE DETAILS "A" & "B")
 - SCORE DRILL CENTER OF MARKS @ A DEPTH OF 4". MARK HANDICAPED & CUT ASPHALT AS REQUIRED. (SEE IMAGES 1-3 ON THIS SHEET)
 - RECORD HOLE D FOR EACH WVD IN EXACT LOCATION PER LANE. (SEE IMAGE 5 ON THIS SHEET)
 - VACUUM, WASH AND HEAT DRY & PRIOR TO EPOXY FILL. (SEE IMAGE 3 ON THIS SHEET)

- USE MANUFACTURERS EPOXY FILLER ONLY (TO BE SUPPLIED BY ATIS)
- FILL BOTTOM OF 5" CORE DRILLED HOLE WITH 10" EPOXY. (SEE IMAGE 4 ON THIS SHEET)
- INSERT WVD WITH ORIENTATION ARROW IN THE SAME DIRECTION AS VEHICLE TRAVEL. (SEE IMAGES 6 & 7 ON THIS SHEET)
- STEP BACK AND VIEW ARROW ORIENTATION IS PARALLEL TO DIVIDER STRIP(S).
- INSURE YOU HAVE HWD RECORDED.
- SEE IMAGE 5 ON THIS SHEET.
- FILL HOLE WITH REMAINING EPOXY TO ROAD SURFACE LEVEL.
- PER IMAGES 8 & 9 ON THIS SHEET
- ATIS WVD SHALL NOT BE PLACED SO AS TO DAMAGE VEHICLE TIRE OR CAUSE OTHER DAMAGE TO THE ROADWAY. NOTE: THIS EPOXY WILL CURE "HARD" IN APPROXIMATELY 2 MINUTES.

RECOMMENDED BY:
SRIJA SHAIK-GANJOURAL, P.E.
COMMISSIONER OF PUBLIC WORKS



ATS American Traffic Solutions
1101016 Solutions
1330 W. SOUTHERN AVE
TAMPA, FL 33629 USA
TEL: (813) 909-9800
WWW.ATISOL.COM

ENGINEER OF RECORD:
ROBERT B. ZATOCNA, P.E.
REG. # 008102

WVD PHOTO & DETAILS
NY 25B / HILLSIDE AVE AT
MAJORS AVE / DENTON AVE
NASSAU COUNTY, NY

NO.	BY	DATE	REVISION
01	WJL	06/14/18	PER NYSDOT COMMENTS
02	WJL	06/24/18	PER MASSDOT COMMENTS

RDG SUBMITTAL
DESIGNED BY: JR
DATE: 05/24/18
APPROVED BY: RIZ
APPROVAL DATE:

JOB NUMBER: 1169
SITE FILE: NASSAU0527
NO. SHEETS: 4
OF 4 SHEETS

LEGEND

- BREAKAWAY BARRICADES
- BREAKAWAY BARRICADES WITH SIGN
- CONSTRUCTION SIGNS
- DRUMS
- CONE
- PRECAST CONCRETE CURB CONSTRUCTION BARRIER (TYPE SPECIFIED)
- DIRECTION OF TRAFFIC FLOW
- FLAGGER
- FLUO TUBE
- ILLUMINATED FLASHING ARROW MOUNTED ON TOWING VEHICLE SHOWING CAUTION MOODE
- ILLUMINATED FLASHING ARROW MOUNTED ON TOWING VEHICLE SHOWING CAUTION MOODE (LEFT TURN, RIGHT)
- TRAFFIC CONTROL TRUCK WITH MOUNTED CRASH CUSHION AND ARROW BOARD SHOWING CAUTION MOODE
- TRAFFIC CONTROL TRUCK WITH MOUNTED CRASH CUSHION AND ARROW BOARD SHOWING CAUTION MOODE (LEFT TURN, RIGHT)
- TEMPORARY CRASH CUSHION (In Other Approval)
- TEMPORARY CRASH CUSHION (In Other Approval)
- WORK AREA
- ARROW PANEL TRAILER OR SUPPORT
- PAINT STRIPPING TRUCK OR OTHER OFF-ROAD VEHICLE

GENERAL NOTES:

1. ADVANCE WARNING SIGNS, DISTANCES, AND TAPER LENGTHS MAY BE EXTENDED AT HORIZONTAL AND VERTICAL CURVATURE OF THE ROADWAY.
2. THE APPROXIMATE LOCATIONS OF THE ILLUMINATED FLASHING ARROW BARRIERS ARE SHOWN ON THE TRAFFIC CONTROL PLANS. THESE LOCATIONS MAY BE ADJUSTED TO THE ROADWAY ON TO POSITION AT A SAFER LOCATION. ILLUMINATED FLASHING ARROW BARRIERS ARE TO BE USED FOR TEMPORARY LANE CLOSURES AND AT LOCATIONS SHOWN ON THE TRAFFIC CONTROL PLANS.
3. PRIOR TO ANY ROAD CONSTRUCTION, TRAFFIC CONTROL SIGNS AND DEVICES SHALL BE IN PLACE.
4. RAISED ARROW SIDE STREETS ENTERING THE ROADWAY AFTER THE FIRST ADVANCE WARNING SIGN SHALL BE PROVIDED WITH AT LEAST ONE WHIP SIGN ROAD WORK AHEAD AS A MINIMUM.
5. ALL EXISTING ROAD SIGNS, PAVEMENT MARKINGS AND/OR ROADWAY PAVEMENT REFLECTORS WHICH CONTACT WITH THE PACKAGED TRAFFIC CONTROL PLAN SHALL BE CORRECTED, REMOVED OR RELOCATED AS DIRECTED BY THE ENGINEER.
6. CONTACTING ON NON-OPERATING SIGNAL INDICATORS ON EITHER THE EXISTING OR PROPOSED TRAFFIC SIGNAL SYSTEMS SHALL BE FLAGGED OR COVERED.
7. MAINTENANCE AND PROTECTION OF TRAFFIC SHALL BE IN ACCORDANCE WITH THE MANUAL OF UNIFORM TRAFFIC CONTROL DEVICES - PART 6. THE ENGINEER SHALL ADVISE THE LOCAL, STATE, AND FEDERAL AGENCIES AND THE LOCAL MANAGEMENT OPERATIONS, UTILIZING THE MANUAL, AND SUPERVISOR AND INCIDENT MANAGEMENT OPERATIONS, APPROVED BY THE ENGINEER.
8. CONSTRUCTION SIGNS SHALL BE PLACED IN ADVANCE OF PROJECT LIMITS.
9. A TRUCKER SHALL BE MOUNTED ON A BREAKAWAY BARRIERS AND CENTERED ON THE ACCESS POINT WITHIN THE AREA OF A LANE OR SHOULDER CLOSURE.
10. CONSTRUCTION SIGNS SHALL BE PLACED TO TRAFFIC BECAUSE OF CONSTRUCTION.
11. CONSTRUCTION SIGNS SHALL BE PLACED FOR LANEWAY PAVEMENT AND W-14 (CORRODED PAVEMENT) SHALL BE USED WHEN SUCH PAVEMENT CONDITIONS EXIST. THE PLACEMENT OF THESE SIGNS SHALL BE AS DIRECTED BY THE ENGINEER.
12. ILLUMINATED FLASHING TRUCK MOUNTED CRASH CUSHION THAT SHALL MOVE WITH ADVANCE OF EACH TRUCK AREA.
13. THE CONTRACTOR SHALL SUBMIT A PLAN FOR THE SAFE ACCESS OF CONSTRUCTION VEHICLES THROUGHOUT THE WORK SITE WHERE SPACE CONSTRAINTS PREVENT ACCORDANCE WITH SECTION 819 OF THE STANDARD SPECIFICATIONS.
14. TRAFFIC SAFETY SERVICES SHALL BE USED IN ACCORDANCE WITH THE STANDARD SPECIFICATIONS FOR TRAFFIC CONTROL, SECTION 818.
15. ALL EXCAVATED AREAS WITHIN OR ADJACENT TO THE ROADWAY SHALL BE BACKFILLED AND COMPACTED TO THE SAME DENSITY AS THE EXISTING ROADWAY. OTHER EXCAVATED AREAS WITHIN THE CLEAR ZONE ARE TO BE EITHER BACKFILLED OR A PRECAST CONCRETE CURB CONSTRUCTION BARRIER SET TEMPORARILY IN PLACE. ROADWAY SURFACE AND PAVEMENT SHALL BE RECONSTRUCTED TO THE ORIGINAL FINISH ELEVATION AND PROPERLY DRAINAGE FOR MAINTAINING PEDESTRIAN CROSSING LOCATIONS AND TYPE AS DIRECTED BY THE ENGINEER.
16. PRECAST CONCRETE CURB CONSTRUCTION BARRIERS SHALL BE PLACED IN ADVANCE OF THE ROADWAY TO PROTECT THE ROADWAY FROM DAMAGE AT THE LONGITUDINAL AND TRANSVERSE LIMITS OF THE CONSTRUCTION AREAS UNLESS OTHERWISE NOTED ON THE STAGE CONSTRUCTION PLANS.
17. THE PLACEMENT AND ON RELOCATION OF PRECAST CONCRETE CURB CONSTRUCTION BARRIERS SHALL BE DETERMINED BY THE ENGINEER. TRAFFIC FLOW MAY BE REDUCED TO ONE LANE IN EACH DIRECTION.
18. CONSTRUCTION ZONE SPEED LIMIT WILL BE DETERMINED BY THE REGIONAL TRAFFIC ENGINEER AT THE TIME OF OR DURING CONSTRUCTION AS REQUIRED BY THE REGIONAL ENGINEER.
19. THE SPEED LIMIT 88-1 BLACK ON WHITE SIGNS SHALL BE LOCATED THROUGH WORK AREAS AS DIRECTED BY THE REGIONAL TRAFFIC ENGINEER.
20. THE REDUCED SPEED AHEAD SIGN, BLACK ON WHITE SHALL BE LOCATED THROUGH WORK AREAS AS DIRECTED BY THE REGIONAL TRAFFIC ENGINEER.
21. TRAFFIC PAVEMENTS DOUBLED IN WORK AREA (88-171), 4 FEET BY 4.5 FEET SIGN SHALL BE LOCATED 880 FEET AFTER THE FIRST ADVANCE WARNING SIGN, WHO SIGN AT ON PROJECTS REQUIRING REMOVAL OPERATION. THE SIGN SHALL BE RELOCATED ON A SLOW MOVING CONSTRUCTION VEHICLE.
22. THE FINAL BITUMINOUS CONCRETE SURFACE PAVEMENT SHALL NOT BE CONSTRUCTED UNTIL THE TEMPORARY PAVEMENT PAVING AND WHEELS SHALL BE SET TO ASPHALT PAVEMENT. THIS TEMPORARY WATERWILL WILL BE REMOVED IMMEDIATELY UPON THE REMOVAL OF THE TEMPORARY PAVEMENT.
23. TRAFFIC CONTROL DEVICES FOR LANE CLOSURES INCLUDING SIGNS, CONES, BARRIERS, ETC. SHALL BE PLACED AS SHOWN ON PLANS. SIGNS SHALL NOT BE PLACED WITHOUT ACTUAL LANE CLOSURES AND SHALL BE IMMEDIATELY REMOVED UPON REMOVAL OF THE CLOSURES.
24. CONES MAY BE SUBSTITUTED FOR DRUMS AND INSTALLED UPON THE APPROVAL OF THE ENGINEER.

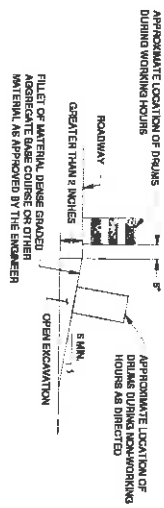
ATS American Traffic Solutions
 1320 W. SOUTHERN AVE
 TEL: (604) 457-7000 FAX: (604) 707-9011
 WWW.ATSON.COM

ENGINEER OF RECORD:
 ROBERT A. ZATCOCK, P.E.
 REG. # 1088102

MOT AND MPT NOTES
 NY 283 / HILLSIDE AVE AT
 MARCUS AVE / DENNY AVE
 NASSAU COUNTY, NY

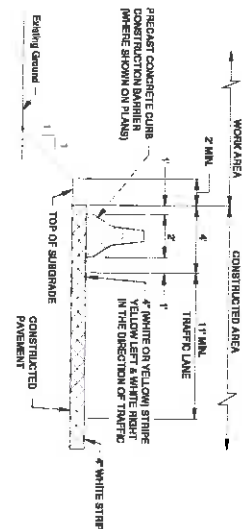
NO.	REV.	DATE	REVISION
01	W/P	05-11-13	PER NYSDOT COMMENTS
02	W/E	05-24-13	PER NASSAU COUNTY COMMENTS
3RD SUBMITTAL			
DESIGNED BY: JR		DATE: 05-28-13	
APPROVED BY: RAZ		APPROVAL DATE:	
JOB NUMBER	DATE	SHEET	
1169	1/169	5	
SITE DIST: NASSAU COUNTY		OF 9 SHEETS	



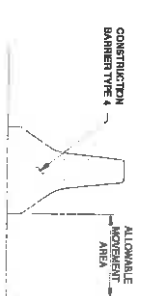


NOTE:
ESCAPE RAMP MUST BE CONSTRUCTED AND MAINTAINED DURING NON-WORKING HOURS WHERE A VERTICAL CURB GREATER THAN 2 INCHES EXIST ALONG TO TRAVELED LANE.

ESCAPE RAMP DETAIL



TYPICAL SECTION PLACEMENT OF PRECAST CONCRETE CONSTRUCTION BARRIER



NOTES:
1. CHANGES TO THE PROPOSED JOINT CLASS AT ANY LOCATION MUST BE APPROVED BY THE ENGINEER.
2. NO WORK OR STORAGE OF MATERIALS WILL BE PERMITTED IN THE ALLOWABLE MOVEMENT AREA.

CONSTRUCTION BARRIER, TYPE 4 JOINT CLASS AND ALLOWABLE MOVEMENT

JOINT CLASS	ALLOWABLE MOVEMENT
A	OVER 16 TO 24 INCHES
B	11 TO 16 INCHES
C	LESS THAN 11 INCHES

REGULATORY APPROACH SPEED OF TRAFFIC (MILES/HOUR)	RECOMMENDED RIGHT DISTANCE TO BEGINNING OF CHANNELING TYPERS			
	RURAL	URBAN	RURAL AND URBAN	MINIMUM
20	300	300	300	300
30	450	450	450	450
40	600	600	600	600
50	750	750	750	750
60	900	900	900	900
70	1050	1050	1050	1050
80	1200	1200	1200	1200
90	1350	1350	1350	1350
100	1500	1500	1500	1500

- NOTES:
- AVOIDANCE MANUEVER IS FOR A SPEED, PATH, AND/OR DIRECTION CHANGE PRIOR TO THE BEGINNING OF CHANNELING TYPERS.
 - RECOMMENDED DISTANCES BETWEEN TWO SEPARATE LANE CLOSURES SHALL BE DOUBLE THE VALUES SHOWN ABOVE.
 - RURAL AND URBAN ROAD DESIGNATIONS SHALL BE AS DEFINED IN THE NBDOT STATE HIGHWAY STRAIGHT LINE DIVISIONS.
 - DESIRABLE VALUES SHALL BE PROVIDED WHEREVER POSSIBLE. IF IT IS NOT FEASIBLE OR PRACTICAL TO PROVIDE DESIRABLE VALUES BECAUSE OF HORIZONTAL OR VERTICAL CURVATURE OR IF THE LOCATION OF THE TYPERS IS NOT POSSIBLE, THEN MINIMUM VALUES MAY BE APPLIED. WHEN MINIMUM VALUES ARE APPLIED, THE TYPERS SHOULD BE GIVEN TO THE USE OF SUITABLE TRAFFIC CONTROL DEVICES AND CHANNELING MARKINGS OF THE CONDITION THAT ARE LEVELY TO BE ENCOUNTERED.
 - TYPERS SHALL BE LOCATED TO MAXIMIZE THE VISIBILITY OF THEIR TOTAL LENGTH.

REGULATORY APPROACH SPEED OF TRAFFIC (MILES/HOUR)	MINIMUM TYPERS WIDTH (FEET)	MINIMUM TYPERS LENGTH (FEET)	MINIMUM TYPERS SPACING (FEET)	MINIMUM TYPERS SPACING ALONG TANGENTS (FEET)	MINIMUM TYPERS SPACING ALONG TANGENTS (FEET)
20	10.2	105	115	125	25
30	15.1	150	165	180	35
40	20.1	200	225	245	45
50	25.1	250	285	310	55
60	30.1	300	345	370	65
70	35.1	350	405	430	75
80	40.1	400	465	490	85
90	45.1	450	525	550	95
100	50.1	500	585	610	105
110	55.1	550	645	670	115
120	60.1	600	705	730	125
130	65.1	650	765	790	135

NOTE:
THE MAXIMUM DROVE APPROACH ALONG CURVES SHALL BE AS DEFINED FOR TYPERS (B) IN THE ABOVE TABLE.



ATS American Traffic Solutions
RED LIGHT PHOTO ENFORCEMENT PROGRAM

1750 W. SOUTHERN AVE
SUITE C, #252 SUITE
TEL: (410) 321-1100 ext 117/4031
WWW.ATS.CO.UK

ENGINEER OF RECORD:
ROBERT B. ZAMONI, P.E.
REG. #1090102

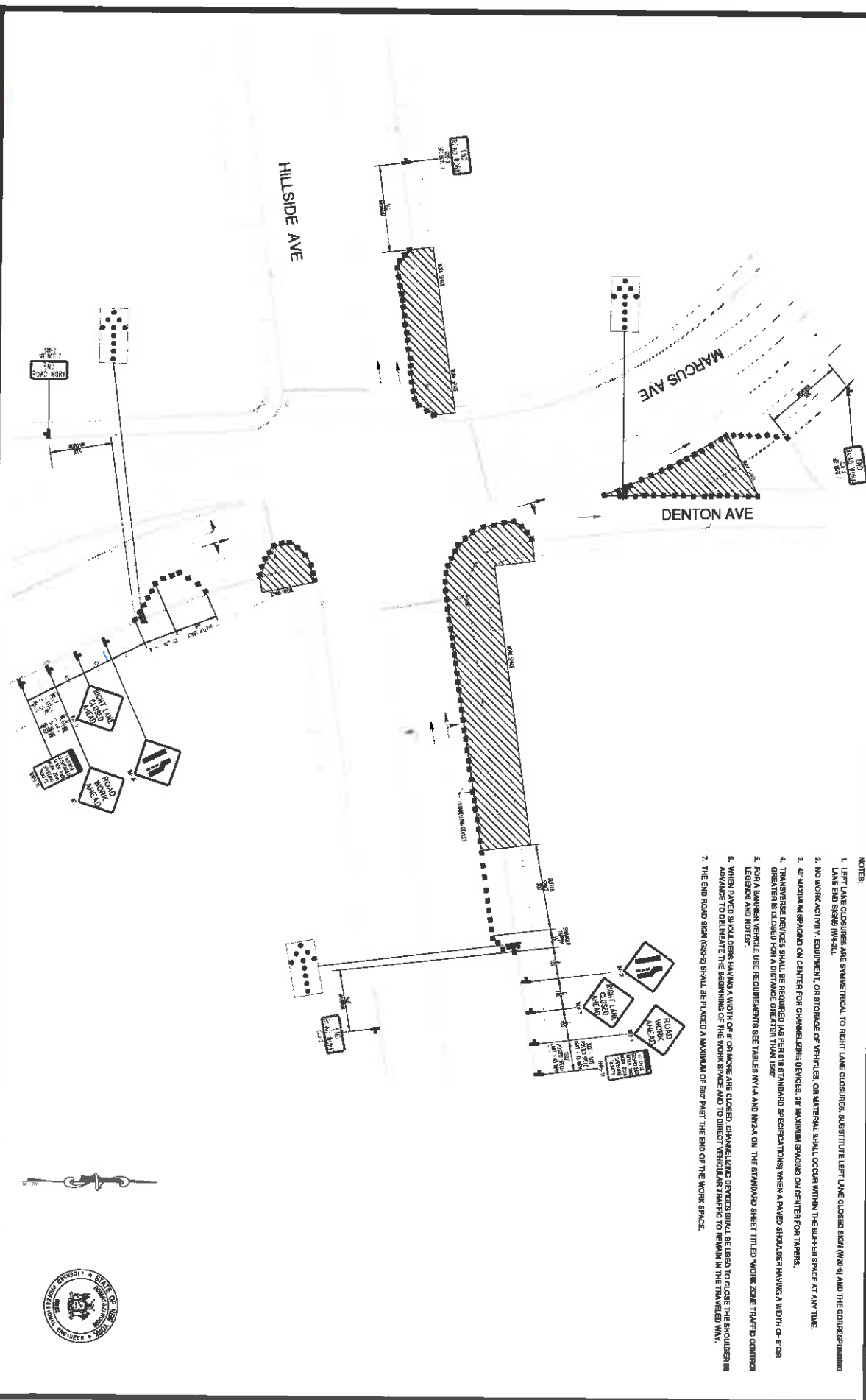
NO.	REV.	DATE	DESCRIPTION	BY	DATE	REVISION
01	W/P	05-21-13	PER NBDOT COMMENTS			
02	W/E	06-24-13	PER NASSAU COUNTY COMMENTS			

3RD SUBMITTAL
CHECKED BY: JH
DATE: 07-28-13
APPROVED BY: RBZ
APPROVAL DATE:

JOB NUMBER: 1169
SITE: NCSO, NCSO1, NCSO2, NCSO3
SHEET NUMBER: 6
OF 8 SHEETS

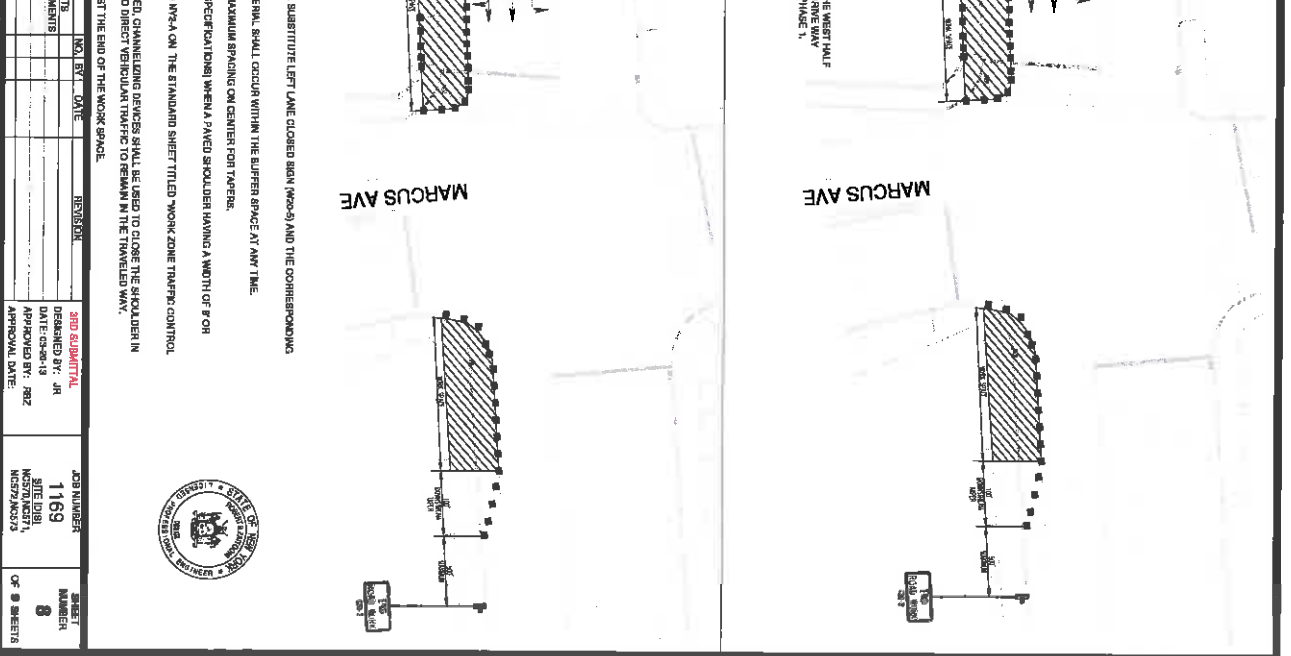
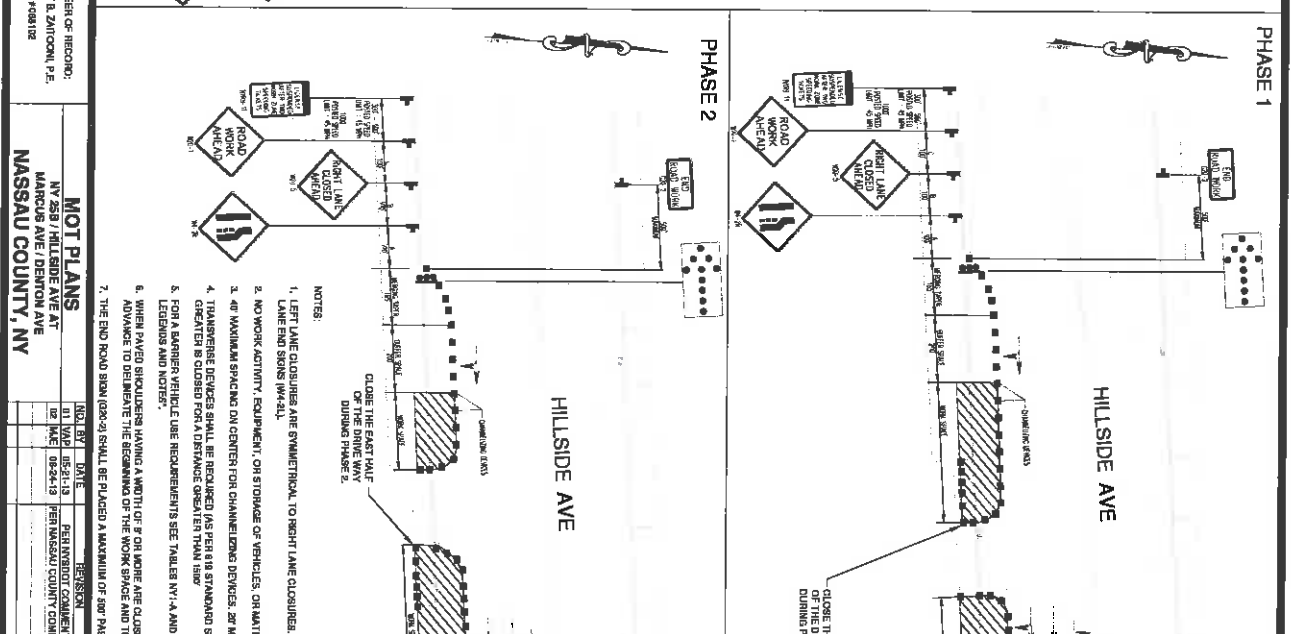
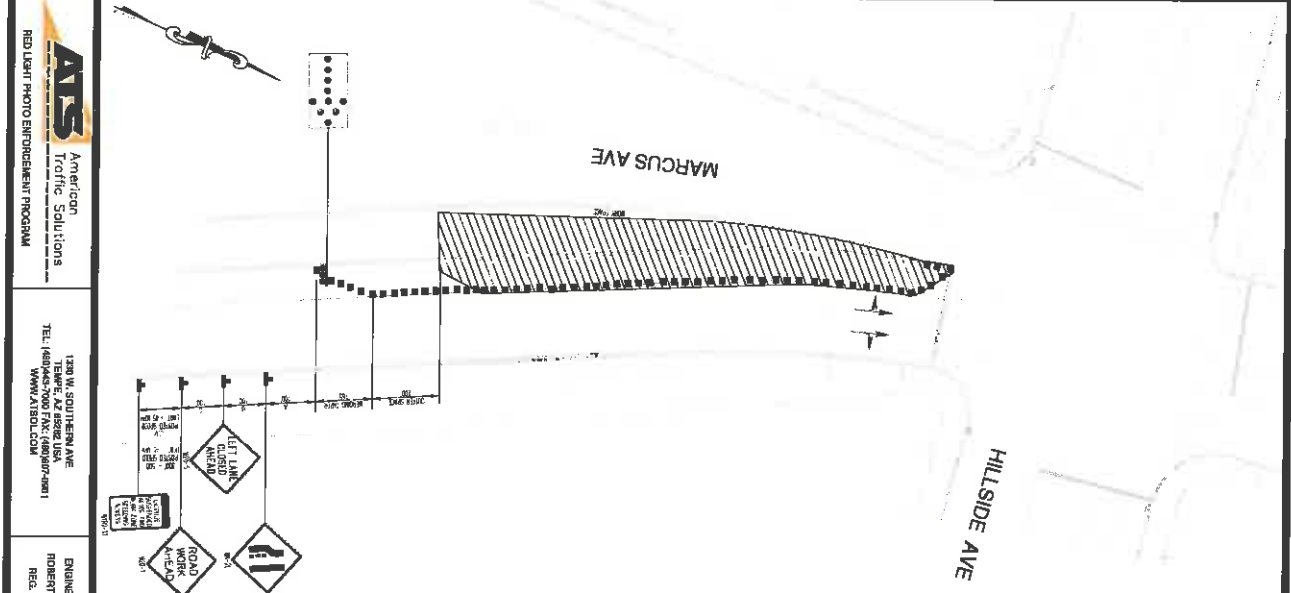
MOT PLANS
 NY 258 / HILLSIDE AVE AT
 MARCUS AVE / DENTON AVE
 NASSAU COUNTY, NY

NO.	BY	DATE	REVISION
01	WJZ	05-24-13	PER NYSDOT COMMENTS
02	WJZ	08-24-13	PER NASSAU COUNTY COMMENTS
3RD SUBMITTAL			
DESIGNED BY: JN			JOB NUMBER: 1169
APPROVED BY: RBZ			
DATE: 08-20-13			SITE DSJ/ NOSTRAND/ NORTHWARDS
APPROVAL DATE:			
			SHEET NUMBER: 7
			OF 8 SHEETS



- NOTES:
1. LEFT LANE CLOSURES ARE SYMMETRICAL TO RIGHT LANE CLOSURES. SUBSTITUTE LEFT LANE CLOSED SIGN (W20-51) AND THE CORRESPONDING LANE SIGN (W20-54).
 2. NO WORK ACTIVITY, EQUIPMENT, OR MATERIAL SHALL OCCUR WITHIN THE BUFFER SPACE AT ANY TIME.
 3. 40' MAXIMUM SPACING ON CENTER FOR CHANNELIZING DEVICES. 20' MAXIMUM SPACING ON CENTER FOR TAPERS.
 4. TRANSVERSE DEVICES SHALL BE REQUIRED (AS PER 816 STANDARD SPECIFICATIONS) WHEN A PAVED SHOULDER HAVING A WIDTH OF 8' OR GREATER IS CLOSED FOR A DISTANCE GREATER THAN 1500'.
 5. FOR A BARRETT VEHICLE USE REQUIREMENTS SEE TABLES NY1-A AND NY2-A ON THE STANDARD SHEET T11-D. WORK ZONE TRAFFIC CONTROL LEASING AND NOTES.
 6. WHEN PAVED SHOULDERS HAVING A WIDTH OF 8' OR MORE ARE CLOSED, CHANNELIZING DEVICES SHALL BE USED TO CLOSE THE SHOULDERS IN ADVANCE TO DELINEATE THE BEGINNING OF THE WORK SPACE AND TO DIRECT VEHICLES/TAPERS TO REMAIN IN THE TRAVELED WAY.
 7. THE END ROAD SIGN (2003) SHALL BE PLACED A MAXIMUM OF 200' PAST THE END OF THE WORK SPACE.





REV	DATE	DESCRIPTION	BY	DATE
1	08-24-13	PER NASSAU COUNTY COMMENTS	JR	08-24-13
2	08-24-13	PER NASSAU COUNTY COMMENTS	JR	08-24-13

MOT PLANS
 NY 259 / HILLSIDE AVE AT
 MARCUS AVE / DENTON AVE
 NASSAU COUNTY, NY

DESIGNED BY: JR
 DATE: 08-24-13
 APPROVED BY: RBZ
 APPROVAL DATE:

JOB NUMBER: 1169
 SHEET NUMBER: 3
 OF 9 SHEETS

ATS American Traffic Solutions
 RED LIGHT PHOTO ENFORCEMENT PROGRAM

1320 W. SOUTHERN AVE
 TALLAHASSEE, FL 32310
 TEL: (904) 876-7800
 WWW.ATSFL.COM

ENGINEER-OF-RECORD:
 ROBERT B. ZAIKOW, P.E.
 REG. 4984192

REGISTERED PROFESSIONAL ENGINEER
 STATE OF FLORIDA
 EXPIRES 12/31/2015

MAINTAIN 4' CLEARANCE FOR BICYCLISTS AND PEDESTRIANS AT ALL TIMES.

MAINTAIN 4' CLEARANCE FOR BICYCLISTS AND PEDESTRIANS AT ALL TIMES.

MAINTAIN 4' CLEARANCE FOR BICYCLISTS AND PEDESTRIANS AT ALL TIMES.

MAINTAIN 4' CLEARANCE FOR BICYCLISTS AND PEDESTRIANS AT ALL TIMES.

MAINTAIN 4' CLEARANCE FOR BICYCLISTS AND PEDESTRIANS AT ALL TIMES.

MAINTAIN 4' CLEARANCE FOR BICYCLISTS AND PEDESTRIANS AT ALL TIMES.



MPT PHASE 1

MPT PHASE 3

ATS American Traffic Solutions
RED LIGHT PHOTO ENFORCEMENT PROGRAM

1300 W. SOUTHERN AVE
MARTIN, NJ 08858
WWW.ATSOL.COM

ENGINEER OF RECORD:
ROBERT B. ZIMOUN, P.E.
REG. #169102

MOT AND MPT PLANS
NY 258 / HILLSIDE AVE AT
MARCUS AVE / DENTON AVE
NASSAU COUNTY, NY

NO. 1	BY	DATE	REVISION	NO. 1	BY	DATE	REVISION	3RD SUBMITTAL	JOB NUMBER	SHEET
01	WJL	05-21-19	PER NASSAU COUNTY COMMENTS					DESIGNED BY: JR	1169	9
02	WJL	05-24-19	PER NASSAU COUNTY COMMENTS					DATE: 03-20-19	1169	
								APPROVED BY: RBZ	NASSAU COUNTY	
								APPROVAL DATE:		

